



Rahm Thomas University

1. Home
2. About Us
3. Vision and Mission
4. Faculties and Departments
5. Message from the President
6. Staff
7. RTU Accreditation
8. RTU Affiliation & Collaboration
9. Academic
10. About the Founder
11. Contact



Mr. Clayton Thomas

Director of Operation-RTU



Dr. Christina Rahms, PhD.

Founder and President -RTU

About RTU

The Rahm Thomas University (RTU) is an accredited University located in **116 Wilson Pike Cir suit 100, Brentwood, TN370272706**

RTU has built a strong global higher learning community through its online and distance education. Geographical boundaries do not limit RTU and its students, who reside in almost all geographical location of the World.

As of June 2023, RTU has provided various levels of education and training programs at the associate's, bachelor's, master's, and doctoral levels.

RTU is an affiliate of Rudolph Kwanue University College accredited by the Government of Liberia through the National Commission on High Education NCHE. and accredited by the Board of Quality Standard, (BQS) California University (CU). International Quality Assurance in Higher Education IQAHE) International Accreditation Commission for Education IACE.

RTU is an institutional member of the International Accreditation Commission for Education IACE.

RTU degree programs Programs are also recognized by the International University of Management and Administration IUMA Benin Republic, International Kingdom University IKU and Grace International Bible University GIBU.

With its global outreach, RTU is committed to bringing the best knowledge, practice and professional skills to students everywhere.



Our Vision

Our vision is to be the World leading Private school of medicine.

Our Mission

We will promote health and provide excellent clinical care while maintaining our strong tradition of reaching underserved populations and reducing health disparities across Liberia and beyond.

We will prepare tomorrow's health care professionals and biomedical researchers by facilitating learning within innovative and integrated curricula and team oriented inter-professional education.

We will cultivate outstanding teaching and research faculty, and we will recruit outstanding students and trainees from highly diverse backgrounds to create a socially responsible, highly skilled workforce.

We will develop and support a rich array of outstanding health sciences research programs, centers, and resources.

We will provide infrastructure and opportunities for collaboration amongst disciplines throughout and beyond our University to support outstanding research.

SHARED VALUES

- Professional reliability
- Quality outputs
- Relevance to national development
- Integrity and transparency
- Efficiency and effectiveness

RTU FACULTIES

1. Faculty of Health Sciences
2. Faculty of Theology
3. Faculty of Education
4. Faculty of Business



The University is currently organized around four (4) Faculties with (28) Departments namely:

1. Faculty of Theology

Departments 10:

- A. Theology
- B. Divinity
- C. Biblical Studies
- D. Mission and Intercultural Studies
- E. Religious Studies
- F. Christian Education
- G. Counseling Psychology
- H. Church Leadership
- I. Church Administration
- J. Church Ministry

2. FACULTY OF EDUCATION.

Departments 3:

- Early Childhood Education
- Primary Education
- Secondary Education

3. FACULTY OF BUSINESS ADMINISTRATION.

Departments 8:

- Strategic Marketing
- Economics
- Financial Accounting & Management
- Organizational Management
- Human Resources Management
- Public Administration
- Procurement
- Banking and Finance

4. Faculty of Health Science

Departments: 7

- *Public Health*
- *Nursing Education*
- *Pharmaceutical Studies*
- *Epidemiology*
- *Medicines*
- *Public Health Administration*
- *Environmental Science & Management*

COLLEGE OF HEALTH SCIENCES

INTRODUCTION

The RTU School of Medicine is training the next generation of health professionals and medical researchers who will improve lives and health care across the globe.

UNDERSTANDING AND EXPERTISE:

Our goal is to be the leading private school of medicine, a promise we make to our students and the people of the World.

RTU Medical College

RTU seeks to transform the way medical students learn the art and science of medicine by integrating basic sciences and clinical skills, providing longitudinal patient care experiences and offering earlier clinical opportunities in specialty fields to better inform residency program decisions.

This redesigned curriculum reflects the ever-changing practice of medicine, meets the desire for early career differentiation and exploration, and incorporates the learning preferences of today's medical students.

The RTU Curriculum was founded on the following principles:

- ✓ To be student-centered and patient-based, while being population, public health, and globally inspired.
- ✓ To facilitate the translation and integration of basic, clinical, and population of sciences to enhance human health and well-being.
- ✓ To provide a strong foundation for entry into graduate medical education within the broad opportunities of medicines, while being flexible and individualized.
- ✓ To be responsive to the changing healthcare environment
- ✓ To focus on promoting, supporting, and maintaining health, not just treating disease.
- ✓ To provide longitudinal engagement with faculty and Robust mentoring.
- ✓ To incorporate multiple modes of student learning.
- ✓ To instill intellectual curiosity development an aptitude for critical thinking and lifelong learning
- ✓ To promote the development of leadership skills, professionalism, ethics, humanism, and service to others.

RTU is composed of three phases:

1. **Foundation phases:** Integrated course work in basic sciences and organ systems
2. **Application phases:** Integrated fundamental clinical rotations that students can complete in one of four programs: at any of the approved medical hospital.
3. **Individualized phases:** Elective and Research opportunities

Coils: represent basic sciences, such as Biochemistry and Microbiology, and specialty areas, such as radiology and behavioral sciences, that are integrated, throughout the curriculum.

Scholarly Concentration program: Students also have the opportunity to pursue a scholarly concentration program beginning in foundation phases and culminating in Individualization phases.

RTU Science Majors

Start here to learn about the majors available in the College of Science. Dual majors, minors, honors tracks and even dual degrees may be available in some programs.

Talk with a recruiter about configuring a program just right for you.

1. Biology

A major in biology is based in a curriculum that gives students the maximum flexibility to design a plan to suit their individual needs and interests. The flexibility in course work matches the flexibility in career options. A bachelor of science degree in biology provides excellent preparation for careers in the healthcare and pharmaceutical industries and is a springboard for admission to advanced degree programs or professional schools in medicine, dentistry, and veterinary medicine.

2. Biochemistry (Biology)

Biochemistry investigates the chemical and molecular foundations of life processes. A student may study the transfer of genetic information into biological structures, the conversion of nutrients into cell constituents and their utilization as sources of energy, the storage of memory, and the chemical nature of neural processes. Laboratory techniques include electrophoresis, chromatography, Western blotting, protein sequence analysis, and peptide mapping. Understanding the development and application of enzymatic assays is

fundamental to this field of study. This rigorous curriculum is excellent preparation for a number of careers in both academic and industrial research, including cancer and AIDS research, medicine, veterinary medicine, dentistry, structural biology, genetics, and medicinal chemistry and drug development.

3. Cell, Molecular and Developmental Biology

Understanding how eukaryotic cells process information from their environment and initiate programs of gene expression leading to growth, development, and functional specification is the essence of a CMD major. Students enrolled in this curriculum will take courses providing a solid foundation in the molecular biology of cells and gain a full appreciation of how molecular complexes interact to make a cell function. This fundamental knowledge in cell and molecular biology will be applied through further coursework in genetics and developmental biology to examine how eukaryotic organisms' function and how specific aspects of that function are perturbed by disease. Within the CMD major, students have the option of focusing their studies on animal systems, plant systems, or both. Graduates with a CMD major are well-prepared to pursue careers in academic or industrial research, biotechnology, genetic engineering, medicine, veterinary medicine, and other health related professions.

4. Health and Disease

Health and Disease is a specialized program of study within biology. The major provides a rigorous curriculum with an emphasis on disease-related upper-level biology courses coupled with general education electives related to health. It is designed for students interested in health careers and gives students multiple career options after graduation.

5. Chemistry

Chemistry majors can pursue one of two degrees: A bachelor of science in chemistr.

The bachelor of science with chemistry as a field of study is designed for those who want training in chemistry and freedom to pursue minors or second majors in other areas. Common areas of interest have been forensic sciences, biology, foreign languages, management, psychology, and other liberal arts programs. The flexibility in this program adapts easily to Study Abroad semesters.

6. Biochemistry (Chemistry)

Biochemists study the chemical basis of life. Areas of research and study include the transfer of genetic information to biological structures, the conversion of nutrients into cell constituents and their utilization as sources of energy, the storage of memory, and the chemical nature of neural processes. Furthermore, biochemists are interested in the chemical details of important processes such as photosynthesis, blood clotting, fertilization, and other functions that may be unique to certain organisms. This program includes six credits of undergraduate research in a wide range of fields. By concentrating advanced elective credit hours in biochemistry and by taking biology

courses, this degree provides an excellent preparation for medical, dental, or veterinary schools or those planning careers in medical research.

Online Application for Admission



This application will take you less than three minutes to complete and does not commit you to attend RTU. RTU does not sell, share, or give away your application information. The full UMT privacy policy is linked at the bottom of this page.

Once completed, an Admissions Counselor will be assigned to work with you to determine if RTU is right for you. An Individual Learning Plan (ILP) will be created based on your prior learning and experience. The ILP will detail your transfer credit and course plan so that you can make an informed

decision.

If you came here for information only, our home page and from there you can easily come back to here. RTU is 100% online and fully accredited.

Undergraduate Admission Requirements

you need to submit these materials to complete the application process:

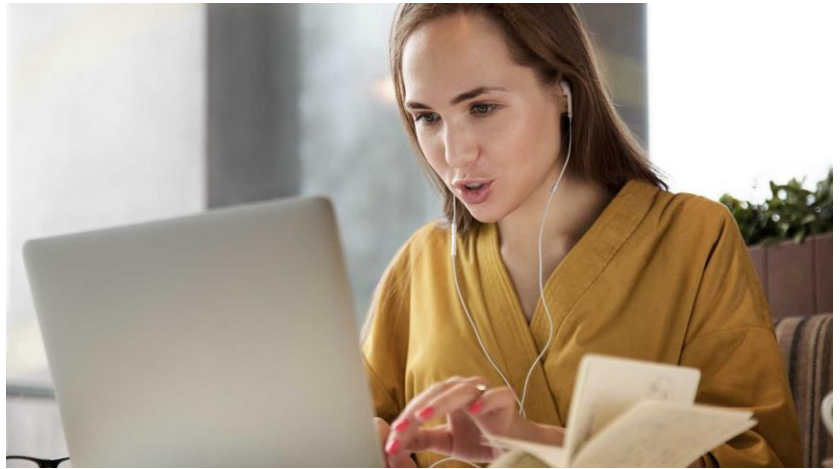
- A completed application form on our website
- A current resume
- A non-refundable application fee of \$30.00 (Waived for RTU Scholarship recipients and VA beneficiaries)
- A non-refundable credit transfer evaluation fee of \$30.00 (Waived for RTU Scholarship recipients and VA beneficiaries)
- At least one of following documents is required as evidence of completing high school or obtaining a GED:
 - High school diploma
 - No mailed photocopies
 - Emailed color scanned image or picture of the original diploma
 - Official high school transcript that shows the diploma awarded date
 - General Educational Development (GED) certificate
 - No mailed photocopies

- Emailed color scanned image or picture of the original certificate
- Official GED transcript that indicates student pass status
- Certification of a passing score on a test that the student's state authorizes and recognizes as the equivalent of a high school diploma or test transcripts indicating that the final score is a passing score or that the student's state considers the test results to meet its high school equivalency requirements.
- Copy of the “secondary school leaving certificate” or other similar document for students who completed secondary education in a foreign country
- Official transcript from accredited college or university that indicates the student successfully completed a total of 60 or more semester or trimester credits, or 72 or more quarter credits in an associate's or bachelor's degree that are acceptable for full credit toward a bachelor's degree at RTU
- For a homeschooled student from a state where state law requires the student to obtain a secondary school completion credential for homeschool (other than a high school diploma or its recognized equivalent), a copy of that credential
- For a homeschooled student from a state where state law does not require the student to obtain a secondary school completion credential for homeschool (other than a high school diploma or its recognized equivalent): a transcript or the equivalent, signed by the student's parent or guardian. Document must list the secondary school courses the student completed and include a statement that the student successfully completed, as defined by the state, a secondary school education in a homeschool setting
- Official transcripts from post-secondary institutions attended for transfer students
- Photo ID – US students: passport or driver's license; International students: passport or other government issued photo ID
- One of following English test scores or records is required for the applicants whose English is not their native language.

Notification:

Prospective students are evaluated for admission as soon as all required documents are received, and notified as soon as the decision process is completed.

Inquiries:



Office of Admissions
located in **116 Wilson Pike**

Cir suit 100, Brentwood,

TN370272706

Phone: (+1615)944-6878

Fax:

Email:

Web:

Graduate Admission Requirements

You need to submit these materials to complete the application process:

- A completed application form (Please complete online at -----)
- A current resume
- A non-refundable application fee of \$30.00 (Waived for RTU Scholarship recipients and VA beneficiaries)
- A non-refundable credit transfer evaluation fee of \$30.00 (Waived for RTU Scholarship recipients and VA beneficiaries)
- For Master's Programs: Official transcripts from post-secondary institutions attended. Must include a transcript showing that a Bachelor's degree or international equivalent was awarded.
- For the Doctorate Programs: Official transcripts from post-secondary institutions attended. Must include a transcript showing that a Master's degree was awarded, or a minimum of 45 graduate-level credits completed, or international equivalents.
- Photo ID – US students: passport or driver's license, International students: passport or other government issued photo ID

- Three Recommendation and Reference Forms (Form can be downloaded online at ([website link](#)))

Additional Requirements:

- Original transcripts from institutions which are not in English must be accompanied by a certified (notarized) English translation.
- An interview may be required, but is not necessary to submit an application.

Notification:

Prospective students are evaluated for admission as soon as all required documents are received, and notified as soon as the decision process is completed.

Inquiries:

Office of Admissions
located in 116 Wilson Pike
Cir suit 100, Brentwood,
TN370272706
Phone: (+1615)944-6878
Fax:

Email:

Web:

RTU is a Distance accredited university providing high quality online degree programs at the associate, bachelor, graduate, and doctoral levels; as well as certificate programs that are currently in high demand. Some of UMT's benefits:

- Study online anywhere, anytime, on any device
- Fast track your degree with credit transfer up to 75% for undergraduate or 50% for graduate degrees
- 46.0% of new students are referred by friends
- 80.3% of students will receive scholarships in the coming year.

FAQs about UMT

The following are among the most frequently asked questions about the Rahm Thomas University and its programs.

What are RTU Email Addresses

General Information:

Admissions:

Registrar:

Student Services:

Accounting:

Where is RTU located?

RTU is located in located in 116 Wilson Pike
Cir suit 100, Brentwood,
TN370272706
Phone: (+1615)944-6878

Is RTU accredited?

Yes! RTU is accredited and affiliate of Rudolph Kwanue University College accredited by the Government of Liberia through the National Commission on High Education NCHE. And accredited by the Board of Quality Standard, (BQS) California University (CU). International Quality Assurance in Higher Education IQAHE) International Accreditation Commission for Education IACE.

RTU is an institutional member of the International Accreditation Commission for Education IACE.

What are the admission deadlines?

There are no deadlines for applications, which are continually reviewed. Admissions is granted on a rolling basis. Students must enroll in term-based programs. Accepted self-paced students can start at any time.

What are the admission requirements?

Please visit the links below to see admission requirements for:
www.

For the graduate program applicant, the admissions committee will also weigh the following criteria:

Does the applicant have a GPA of 2.75? Does the applicant have an undergraduate degree from an accredited program? Does the applicant have at least two years work experience? Applicants will be notified quickly of the admission decision, but no later than one month from date of submittal.

How flexible is the program to fit my individual goals and needs?

RTU is dedicated to ensuring that each student gets the maximum benefit from his or her educational experience. Advisors can help guide students in the selection of courses and tracks that suit their individual needs.

RTU will make every effort to help students get the most of their master's degree.

Can I take the degree part time?

Yes, in fact most current students are enrolled part-time. We recognize that most of those who are interested in this program are already in the work force. The Master and Doctoral Programs must be completed within a two to three-year period.

How much is the tuition?

RTU's tuition is \$390 per credit hour. This does not include nominal university fees, the application fee, textbooks and materials, etc.

Can I get financial aid?

RTU is approved 10% scholarship to all her Students

What is RTU?

RTU is Rahm Thomas University

Undergraduate Programs

Associate Degree Programs

Associate and Bachelor Degree Programs

- Criminal Justice Administration
- Health Administration
- Human Resources Management
- Education
- International Management
- Marketing Management
- Business Administration
- Health Administration

Graduate Programs

Master Degree Programs

- Business
- Project Management
- Supply Chain Management
- Public Administration
- Public Health Administration
- Theology
- Education

Doctorate Programs

1. Business Administration
2. Medicine
3. Public Health Administration
4. Public Health Epidemiology
5. Theology
6. Education

Associate of Business Administration (ABA)

The ABA offers courses for students who are high school graduates or possess a GED. The ABA requires 60 credit-hours of instruction at the lower level (freshman and sophomore years).

The ABA places a strong emphasis on general education courses that will provide a foundation for entry to the Bachelor in Business Administration (BBA) program. General education courses are designed to broaden a student's educational foundation. They include courses in such areas as communications, English, government, history, psychology, sociology, mathematics, and statistics.

Applicants to the ABA program must have a high school diploma or GED. Applicants to the ABA program who have prior education at an appropriately accredited institution may transfer a maximum of 45 credit-hours towards the ABA requirements.

ABA Program Objectives

Upon successful completion of the program, students will be able to:

- Demonstrate a basic knowledge of the core business disciplines
- Analyze business performance using quantitative skills
- Use information technology to solve business problems

ABA Core Courses	
ACM 101	Accounting for Managers
MIS 201	Management Information Systems
ECM 107	Economics for Managers
INB 108	Introduction to Business
PMK 110	Principles of Marketing

Bachelor of Business Administration

The BBA requires the successful completion of a total of 120 credit hours of instruction, 60 of which are at the upper level (junior and senior years).

A student must complete at least 30 credit hours in General Education to receive the BBA degree. A student must also complete 33 credit hours of Business Administration core courses, 15 credit hours in major courses, and 3 credit hours of Capstone courses. The remaining credit hours consist of major courses (if applicable) and electives.

BBA Program Objectives

Upon successful completion of the program, students will be able to:

Demonstrate a basic knowledge of the core business disciplines

Analyze business performance using quantitative skills

Use information technology to solve business problems

Demonstrate effective and professional communication skills

Apply critical thinking skills to business situations and formulate business strategies

BBA Courses

Accounting for Managers

Management Information Systems

Economics for Managers

Principles of Finance

Business Mathematics

Introduction to Business

Principles of Management

Legal Environment of Business

Entrepreneurship

Principles of Marketing

Basic Statistics

Bachelor of Health Administration

The BHA requires the successful completion of a total of 120 credit hours of study.

A student must complete at least 30 credit hours in General Education to receive a BHA degree. A student must also complete 27 credit hours of Health Administration core courses and a BHA capstone course. The remaining credit hours consist of elective courses.

HA 105 Essential Medical Terminology is mandatory for students who neither have prior work experience in the field of Health Administration nor have taken similar courses prior to enrolling in this program.

BHA Program Objectives

Upon successful completion of the program, students will be able to:

Utilize a broad knowledge of the foundation concepts and advanced topics in health administration and management

Apply management theories in practice, especially as applied to health administration and management

Conduct health information searches using up-to-date information technology

Analyze health care data using statistical knowledge to guide management decision making
 Operate in the healthcare management field in various organizations and work with health professionals

BHA Core Courses	
	Introduction to Health Services
	Healthcare Organization Management
	Information Technology for Health Professions
	Epidemiology and Community Health
	Introduction to Healthcare Law and Ethics
	Healthcare Management
	Managed Healthcare
	Long-Term Care Management
	Health Services Marketing

BHA Recommended Electives	
	Business Communication
	Organizational Communication
	Essential Medical Terminology
	Human Resources Management
	Project Management
	Basic Statistics

MBA Program Objectives

Upon successful completion of the program, students will be able to:
 Demonstrate knowledge in the functional areas of business operations
 Apply leadership and teamwork skills in various organizations
 Analyze complex business problems with analytical skills, decision-making tools and technologies
 Apply effective communicate skills in the business environment
 Evaluate the legal and ethical environment of business

MBA Courses

Accounting
 Communication and Soft Skills
 Economics
 Leadership and Organization
 Operations, Logistics, and Supply Chain Management
 Business Law and Ethics
 Information Technology
 Marketing and Sales

Master of Health Administration

The Master of Health Administration (MHA) is a graduate degree designed specifically for managers and administrators in health services, health professionals who have managerial and administrative responsibilities, health professionals who change their careers to become managers and administrators, as well as for those managers who work in related fields such as health insurance, government health policy, and the pharmaceutical industries.

The MHA provides students with graduate level knowledge, tools, techniques and insights to become capable managers and administrators in various organizations in health services.

The MHA degree program is a 45 credit-hour program. Students must take ten core courses in health administration, one capstone course, and four electives from disciplines such as health administration, business administration, or project management. The combination of core courses and electives provides a strong foundation in theory and practice to allow MHA graduates to do a good job performing their managerial and administrative duties in health services.

MHA Program Objectives

Upon successful completion of the program, students will be able to:

Evaluate the impact of economic, social, and policy factors on health policy

Analyze legal and ethical issues relevant to healthcare administration

Examine data in health care organizations with qualitative, quantitative and decision making tools

Apply knowledge and skills necessary to manage and administer health care organizations

MHA Courses

Economics of Health and Healthcare
Financial Management in Health Services
Health Services System
Epidemiology and Public Health
Organizational Behavior in Health Services
Law and Ethics in Health Services
Healthcare Management
Long-Term Care Management
Health Services Marketing
Statistics in Health Services

MHA Acceptable Electives

Managerial Accounting in Healthcare
Communication and Soft Skills
Managed Healthcare
Global Health
Quality Management in Health Services
Leadership and Organization
Project Management

Doctor of Business Administration (DBA)

The Doctor of Business Administration (DBA) program at RTU is a practice-oriented, professional doctoral program intended for scholars, executives, and senior managers who want to expand their knowledge, skills, and abilities to the fullest extent possible. A combination of analytical, practical, and research-based approaches is used to equip graduates with an understanding of management thought and practices, as well as a theoretical, philosophical, and real-world understanding of business administration principles and practices.

Course content reflects current business practices in best-of-class organizations.

Courses balance nurturing an appreciation of the role of theory in effective management with practical how-to insights.

While the emphasis of the program is directed toward managing in a technology-driven world, management basics that apply to all business organizations are covered. The program addresses the ethical and legal foundation for the student's behavior in commercial, nonprofit, and government settings. It imbues the student with in-depth knowledge of managing organizations, programs, and projects. It describes how effective managers lead, how they make decisions, how they motivate.

Consistent with accreditation guidelines, the curriculum includes courses on ethical and global issues, the influence of political, social, legal and regulatory, environmental and technological issues, and the impact of demographic diversity on organizations. In addition, the curriculum includes foundation knowledge for business in behavioral science, economics, and mathematics and statistics, as well as emphasizing written and oral communication.

The DBA program requires the student to complete a minimum of 60 semester credit hours at the doctoral level. Transfer credits are not granted toward the fulfillment of DBA requirements. Applicants to the DBA program must have earned a Master's Degree at an appropriately accredited institution of higher learning or a minimum of 30 relevant graduate-level credits prior to formal admission to the program.

DBA Program Objectives

Upon successful completion of the program, students will be able to:

Adapt the scientific method to studying management problems they encounter

Have a thorough understanding of the evolution of management thought

Employ the highest level of analytical thinking to identify, study, and solve problems

Master the key research techniques, including:

Survey research

Data gathering through interviews

Data gathering through the use of unobtrusive measures

Establishing and testing hypotheses

Statistical analysis of data

Design and construct a major, publishable research project (their doctoral dissertation)
 Demonstrate that they can defend the original ideas they develop and the analyses they carry out (the dissertation defense)
 Adapt critical thinking to review the management, economic, political, technological, and social issues that societies must handle today

DBA Core Courses	
	Economic and Financial Theory
	Analytical Techniques in Research
	Philosophical Foundations of Knowledge & Research
	Evolution of Management Thought
	Management as a Behavioral Science
	Current Issues in Management
	Business-Government Relations
	Managing Modern Business Operations
	Leadership and Ethics
	International Management
	Technology, Innovation, and Entrepreneurship
	Directed Readings and Research
	Special Topics in Research
	Dissertation Research

Tuition & Fees

Tuition		
Tuition per credit hour	\$	390
Tuition per credit hour for Students Receiving one of the RTU Scholarships	\$	250
Tuition per credit hour for International Students	\$	500
Fees		
Application Fee	\$	40
Transfer Credit Evaluation Fee	\$	100
Semester Registration Fee	\$	500
Late Registration Fee (applies on and after the first day of a semester start)	\$	40
Re-admissions Fee	\$	80
Change-of-Program Fee	\$	50
Change-of-Schedule Fee	\$	30
Continuing Enrollment Fee	\$	30
Transcript Fee	\$	40
Graduation Processing Fee	\$	150
Commencement Fee	\$	75
Replacement Diploma Fee	\$	150

